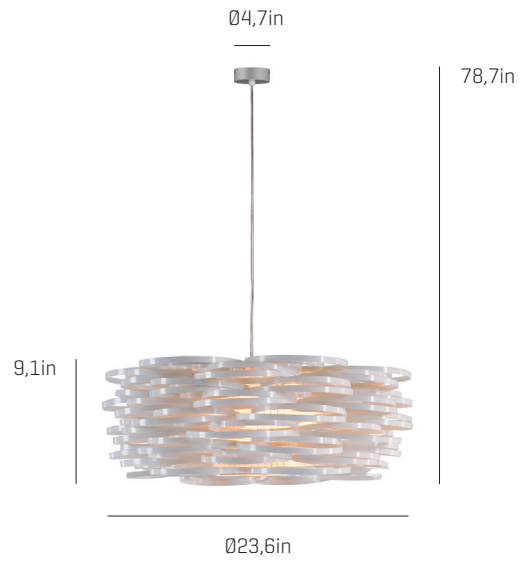


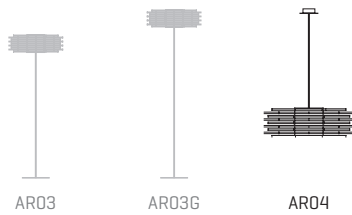
# Aros

ref. **AR04**

Pendant lamp



## Aros Collection



### MATERIAL FINISHES

#### LAMPSHADE

Polypropylene

One color



Painted steel

#### CANOPY AND CABLE

Steel gloss nickel-plated

Black or transparent cable


### RECOMMENDED BULBS

#### 120V - 60Hz

 E26 Med. - Max. 1x100 W

 E26LED - Max. 1x13 W

upon request:

 GU24 - Max. 1x23 W

### OTHER TECHNICAL DATA

#### NET WEIGHT

2,4lb

#### PACKAGING

24x24x13in

7,1lb

#### ELECTRICAL FEATURES



#### CERTIFICATIONS



## Aros

ref. **AR04**

Suitable for indoor use, at 77°

Apta para uso interior a temperatura ambiente de 77°F

Box contains | Contenido de la caja:

**A** - Lampshade | Tulipa [1]

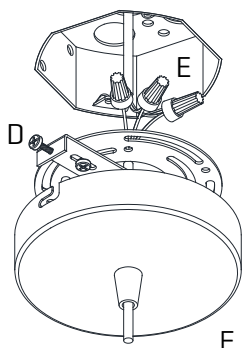
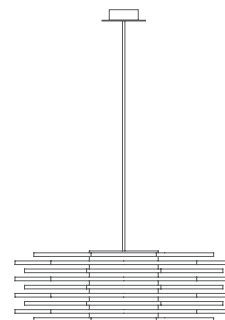
**B** - Holding piece | Pieza de sujeción [1]

**C** - Lampholder | Portalámparas [1]

**D** - Security screws | Tornillos de seguridad [2]

**E** - Electrical disposal | Ficha [1]

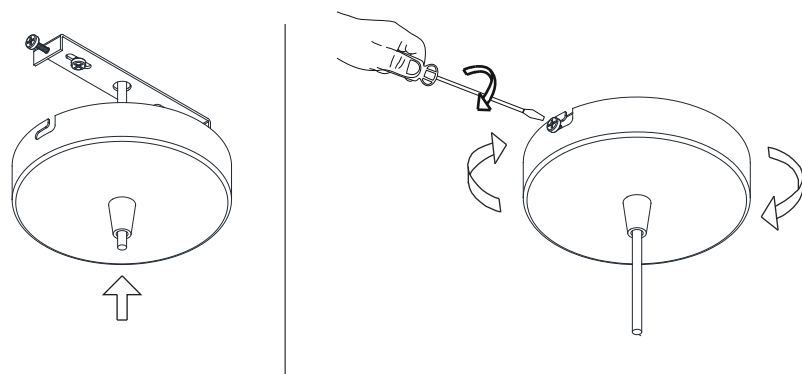
**F** - Canopy | Florón [1]



**1**

Pass the electric cables to the interior and do the electric connection, please follow the instructions.

Pasar los cables eléctricos al interior y hacer la conexión eléctrica dentro, siguiendo las instrucciones.



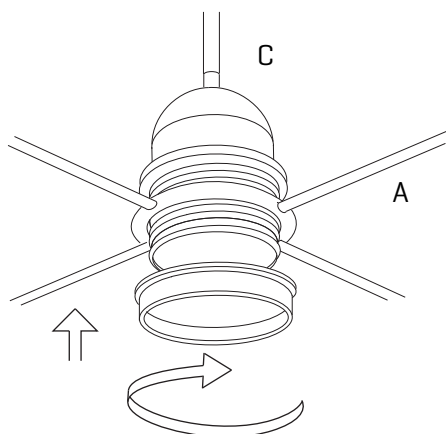
**2**

Insert the canopy in the holding piece and tight the security screws.

Tighten the strain relief situated on the canopy

Encajar el florón en la pieza de sujeción y apretar los tornillos de seguridad.

Apretar el tensor del cable situado en el florón.



**3**

Insert the lampshade into the lampholder and tighten the nut.

Encajar la tulipa en el portalámparas y apretar la tuerca.