

Aros

LED

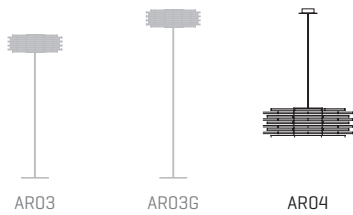
ref. **AR04-LD**

LED / DIMMABLE

Pendant lamp



Aros Collection



MATERIAL FINISHES

LAMPSHADE

Polypropylene

One color



Painted steel

Bottom diffuser


CANOPY AND CABLE

Steel gloss nickel-plated

Black or transparent cable

RECOMMENDED BULBS

100-277V - 60Hz

 18,1W 3000K 1776lm built-in upon request 2700K 1645lm

Dimming system: 0-10 V

upon request PHASE CONTROL (only 120V)

OTHER TECHNICAL DATA

NET WEIGHT

4,4lb

PACKAGING

24x24x13in

7,4lb

ELECTRICAL FEATURES



CERTIFICATIONS



Aros

ref. **AR04-LD**

Suitable for indoor use, at 77°F

Apta para uso interior a temperatura ambiente de 77°F

Box contains | Contenido de la caja:

A - Lampshade | Tulipa [1]

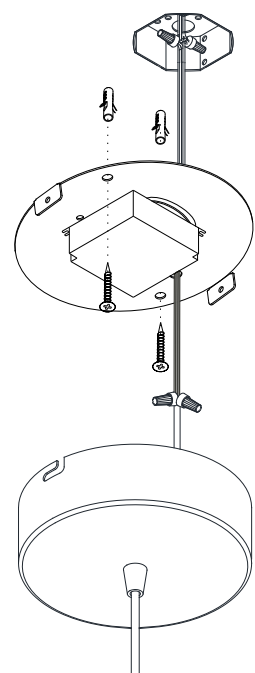
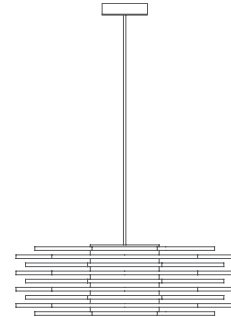
B - Holding piece | Pieza de sujeción [1]

C - Security screws | Tornillos de seguridad [2]

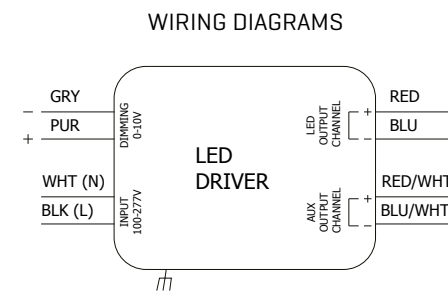
D - Wall Plugs | Tacos [2]

E - Canopy | Florón [1]

F - Screws | Tornillos [2]



1.1



1.2

1

Please! Switch off the main current supply before start the instalation.

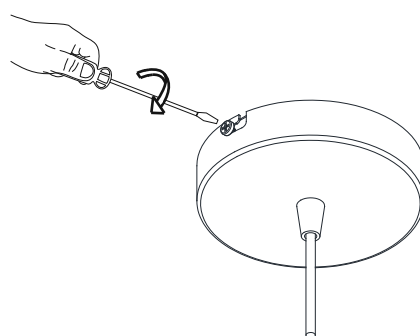
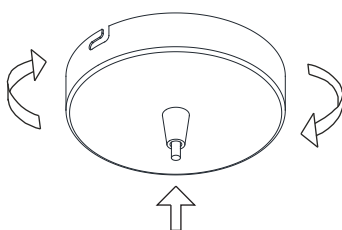
1.1 Drill the holes in the ceiling, fit the wall plugs into them and screw the holding piece.

1.2 Switch off the main electrical supply and do the electric connection, please follow the instructions.

¡Atención! Apague el suministro principal de corriente antes de iniciar la instalación.

1.1 Realizar los agujeros en el techo, colocar los tacos y atornillar la pieza de sujeción.

1.2 Desconectar la corriente principal y hacer la conexión eléctrica siguiendo las instrucciones.



2

Insert the canopy in the holding piece and tight the security screws.

Tighten the strain relief situated on the canopy

Encajar el florón en la pieza de sujeción y apretar los tornillos de seguridad.

Apretar el tensor del cable situado en el florón.