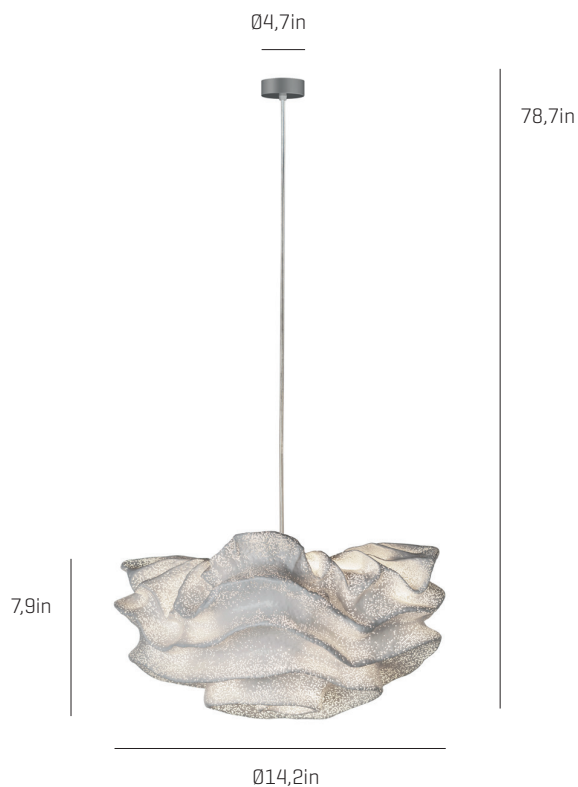


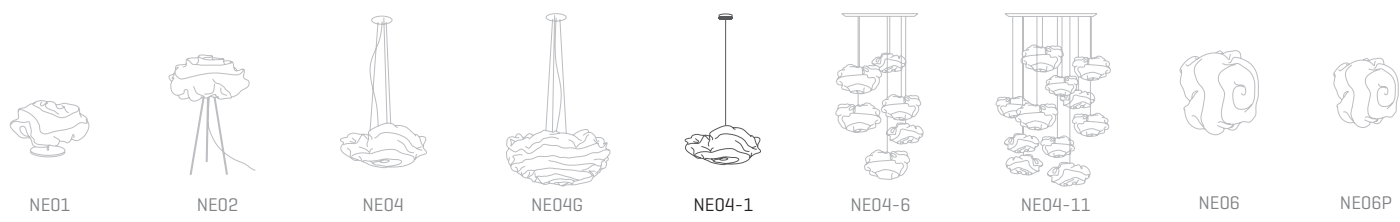
# Nevo

ref. **NE04-1**

Pendant lamp



## Nevo Collection



## MATERIAL FINISHES

### LAMPSHADE

Painted stainless steel

One color to choose



Steel gloss nickel-plated and stainless steel




### CANOPY AND CABLE

Steel gloss nickel-plated

Transparent cable

## RECOMMENDED BULBS

### 100-277V - 60Hz

-  E12 - Max. 2x60 W
-  E12 LED - Max. 2x7 W
-  E12 - HALOGEN BULB - Max. 2x40 W

upon request:

-  GU24- Max. 1x23 W

## OTHER TECHNICAL DATA

### NET WEIGHT

2,6lb

### PACKAGING

17x 17x 11,8in  
5lb

### ELECTRICAL FEATURES



### CERTIFICATIONS



## Nevo

ref. **NE04-1**

Suitable for indoor use, at 77°F

Apta para uso interior a temperatura ambiente de 77°F

Box contains | Contenido de la caja:

**A** - Lampshade | Tulipa [1]

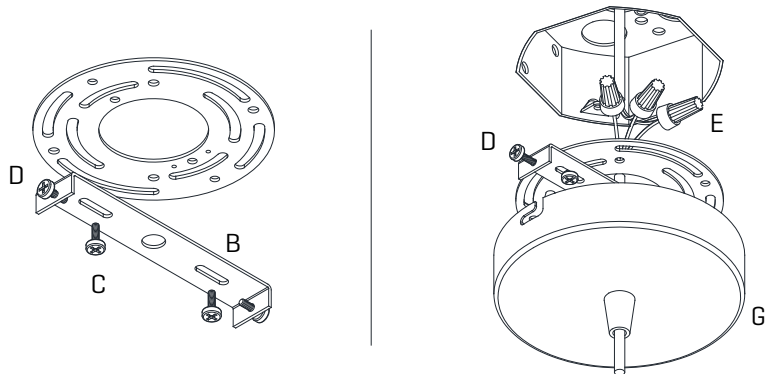
**B** - Holding piece | Pieza de sujeción [1]

**C** - Lampholder | Portalámparas [2]

**D** - Security screws | Tornillos de seguridad [2]

**E** - Electrical disposal | Ficha [3]

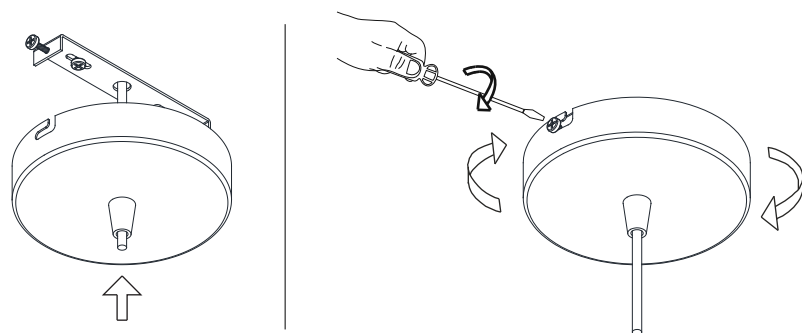
**F** - Canopy | Florón [1]



**1**

Pass the electric cables to the interior and do the electric connection inside the octagon box, please follow the instructions.

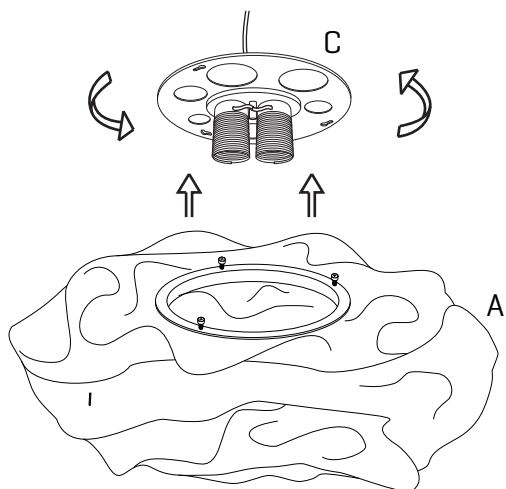
Passar los cables eléctricos al interior y hacer la conexión eléctrica dentro de la caja de conexiones, siguiendo las instrucciones.



**2**

Insert the canopy in the holding piece and tight the security screws.  
Tighten the strain relief situated on the canopy.

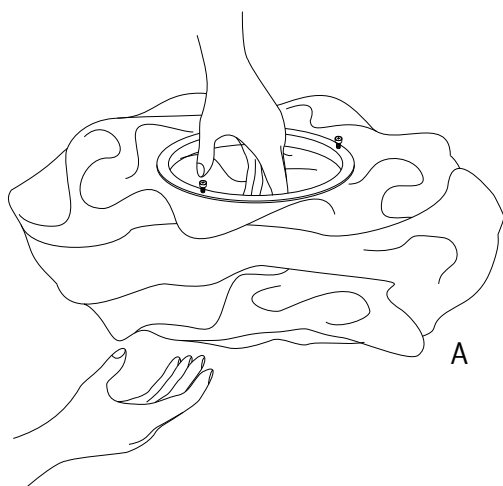
Encajar el florón en la pieza de sujeción y apretar los tornillos de seguridad.  
Apretar el tensor del cable situado en el florón.



3

Place the light bulbs. Fit the lampshade in the diffuser[metal hoop] grooves and turn it until it reaches the endstop. Tight the fillet of the fixing screws to fasten the shade and the whole set.

Colocar las bombillas. Encajar la tulipa en las rendijas del soporte y girarla hasta que haga tope. Apretar la rosca de los tornillos de enganche para asegurar el conjunto.



4

The lamp should be treated carefully. Occasionally holding of the lampshade with strength may modify its original design. To solve it, open the lampshade and mold with your hands all the crushed parts so that they recover their original shape.

NOTA: The mesh should never be in contact with the bulbs.

Debido a la flexibilidad del material, al manejar la tulipa se puede modificar su diseño original. Para solucionarlo, moldear con la mano las zonas dónde se aplaste para que vuelvan a su posición original.  
NOTA: La malla no debe estar en contacto con las bombillas.