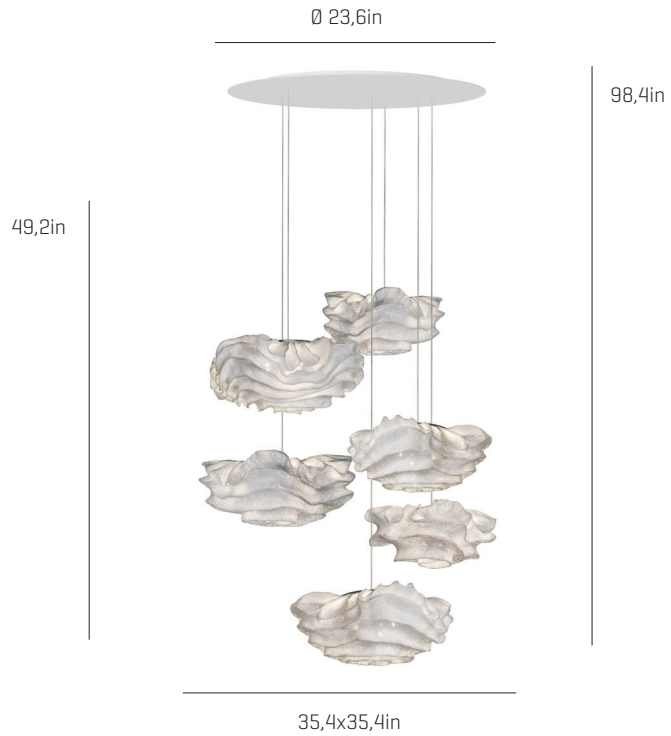


Nevo

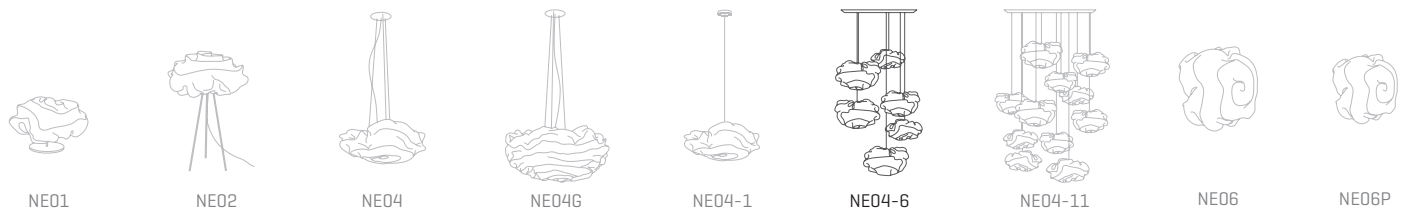
ref. **NE04-6**

Lampshades
refs. 3xNE06P, 3xNE04-1

Pendant lamp



Nevo Collection



MATERIAL FINISHES

LAMPSHADE

Painted stainless steel

One color to choose



Steel gloss nickel-plated and stainless steel

CANOPY AND CABLE

DIBOND®

Transparent cable

RECOMMENDED BULBS

100~277V - 60Hz

E12 - Max. 12x60 W

E12 LED - Max. 12x7 W

E12 HALOGEN BULB - Max. 12x40 W

upon request:

GU24- Max. 6x23 W

OTHER TECHNICAL DATA

NET WEIGHT

20,7lb

PACKAGING

23,6x31,5x32,3in

40lb

ELECTRICAL FEATURES



CERTIFICATIONS



Box contains | Contenido de la caja:

A - Lampshade | Tulipas [6]

B - Canopy | Florón [1]

C - Frame | Soporte [1]

D - Cap | Tapón [3]

E - Screws | Tornillos [3]

F - Wall plug | Tacos [3]

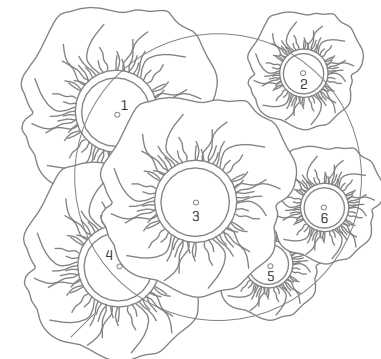
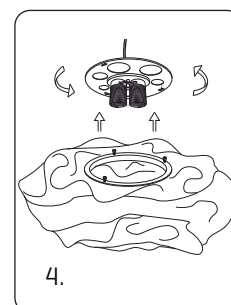
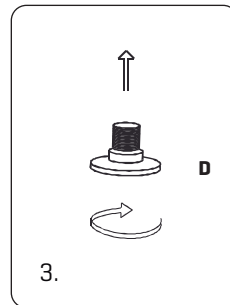
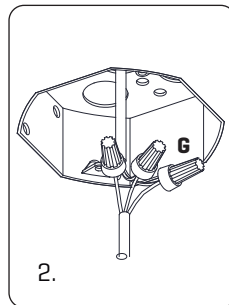
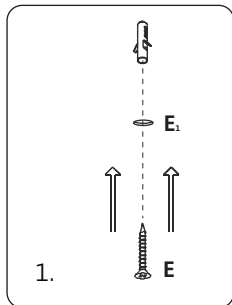
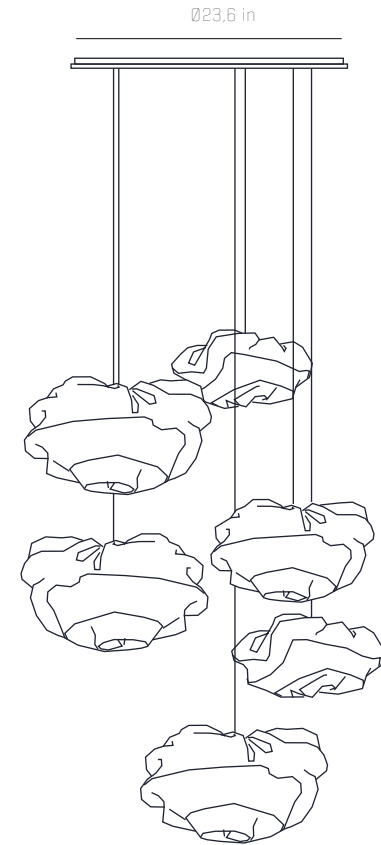
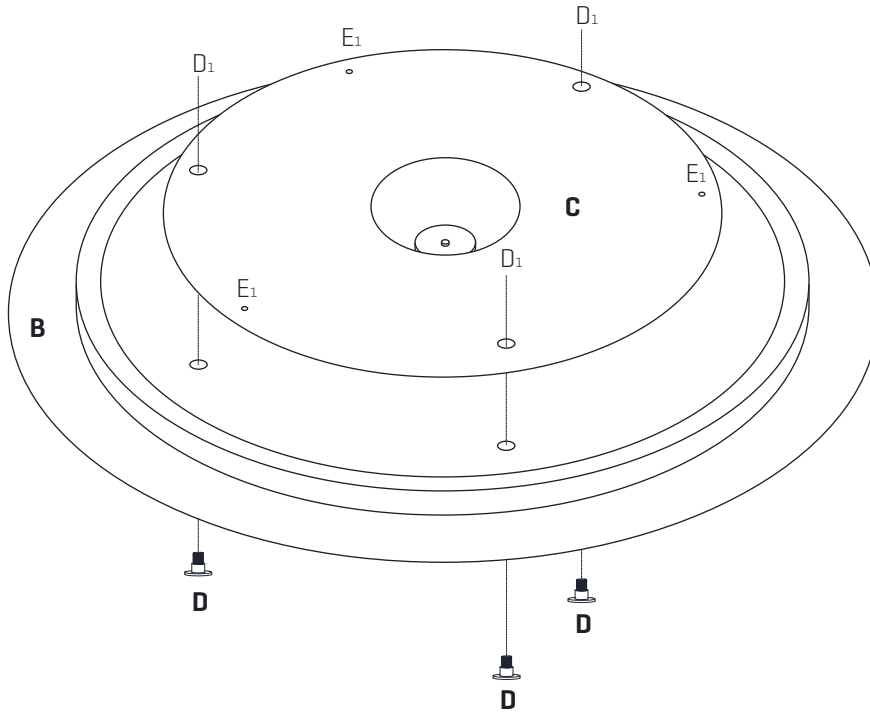
G - Electrical disposal | Ficha conexión [3]

ref. **NE04 - 6**

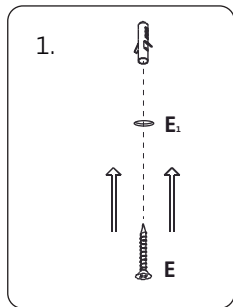
Suitable for indoor use at 77°F

Apta para uso interior a temperatura ambiente de 77°F

FRONTAL VIEW | VISTA FRONTAL



35,4x35,4 in

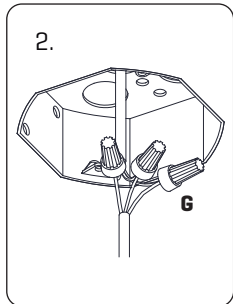


1. Make holes in the ceiling as marked in the frame with the letter E₁, insert the wall plugs and fix the frame.

* Our plugs are appropriate for concrete ceilings only

1. Hacer los taladros en el techo según los marcados en el soporte con la letra E₁, colocar los tacos y fijar el soporte.

* Nuestros tacos son sólo aptos para superficies de hormigón

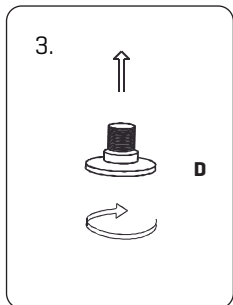


2. Pass the electrical wires inside the octagon box.

Make the electrical connections taking care to respect the correct polarity as the color code.

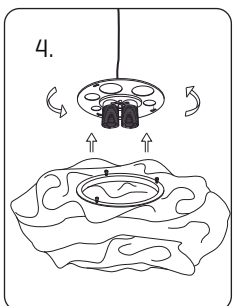
2. Pasar los cables eléctricos al interior de la caja de conexiones.

Realizar la conexión eléctrica en las fichas de conexión G teniendo cuidado de respetar la polaridad correcta según el código de colores.



3. Once the frame is fixed, screw the caps in the holes marked with D₁.

3. Colocado el soporte, enroscar los tapones en los taladros marcados con la letra D₁.



4. All the lampholder are marked with its appropriate lampshade [name or number].

Place the light bulbs. Fit the lampshade in the diffuser [metal hoop] grooves and turn it until reaches the endstop. Tight the fillet of the fixing screws to fasten the whole set.

4. Todos los portalámparas están marcados con la tulipa correspondiente [nombre o número].

Colocar las bombillas. Encajar la tulipa en las rendijas del soporte y girarla hasta que haga tope.

Apretar los tornillos para asegurar el conjunto.