

# Luisa

ref. **LS04G**

Pendant lamp



## Luisa Collection



LS04



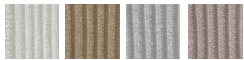
LS04G

## MATERIAL FINISHES

### LAMPSHADE

Painted stainless steel

One color to choose



Stainless steel


### CANOPY AND CABLE


Steel gloss nickel-plated

Transparent cable

## RECOMMENDED BULBS

### 120V - 60Hz

 E26 Med. - Max. 1x100 W

 E26 Med. - Max. 1x42 W

 E26LED - Max. 1x13 W

upon request:

 GU24 - Max. 1x23 W

## OTHER TECHNICAL DATA

### NET WEIGHT

6lb

### PACKAGING

20x20x20,9in

9lb

### ELECTRICAL FEATURES



### CERTIFICATIONS



## Luisa

ref. LS04G

Suitable for indoor use, at 25°C

Apta para uso interior a temperatura ambiente de 25°C

Box contains | Contenido de la caja:

**A** - Lampshade | Tulipa [1]

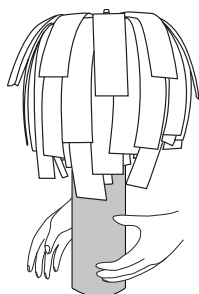
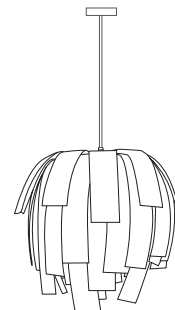
**B** - Holding piece | Pieza de sujeción [1]

**C** - Lampholder | Portalámparas [1]

**D** - Security screws | Tornillos de seguridad [2]

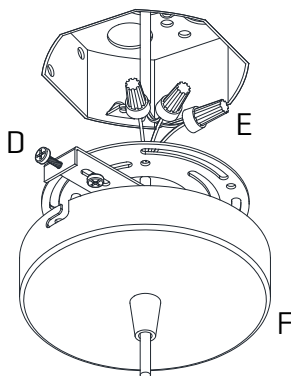
**E** - Electrical disposal | Ficha [1]

**F** - Canopy | Florón [1]



ATTENTION! During installation, handle the lampshade by the cardboard-die, prevent the possibility of modify its original design.

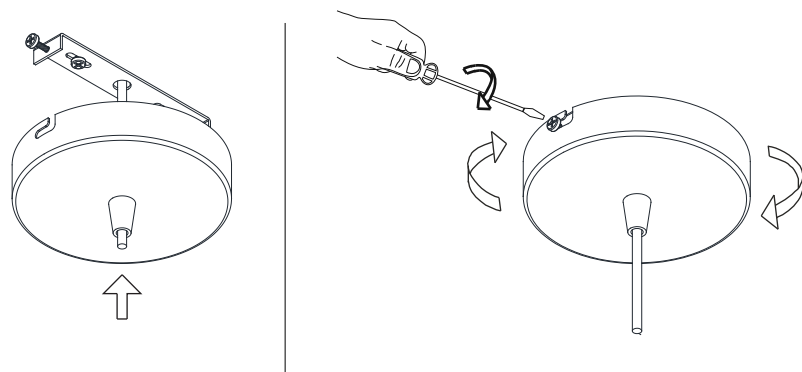
¡ATENCIÓN! Durante la instalación, manipular la luminaria por el troquel de cartón, evitando que se pueda modificar su diseño original.



1

Pass the electric cables to the interior and do the electric connection inside the octagon box, please follow the instructions.

Pasar los cables eléctricos al interior y hacer la conexión eléctrica dentro de la caja de conexiones, siguiendo las instrucciones.



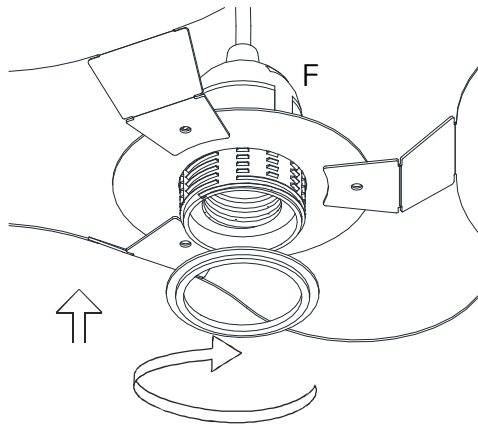
2

Insert the canopy in the holding piece and tight the security screws.

Tighten the strain relief situated on the canopy

Encajar el florón en la pieza de sujeción y apretar los tornillos de seguridad.

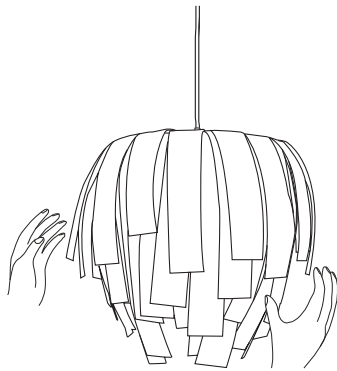
Apretar el tensor del cable situado en el florón.



3

Insert the lampshade into the lampholder and tighten the nut.

Encajar la tulipa en el portalámparas y apretar la tuerca.



4

The lamp should be treated with care. Occasionally getting the lampshade with strength may modify its original design. To solve it, open the lampshade and mold with your hands all the crushed parts so that they recover their original shape.

Debido a la flexibilidad del material, al manejar la tulipa se puede modificar su diseño original. Para solucionarlo, moldear con la mano las zonas donde se aplaste para que vuelvan a su posición original.