

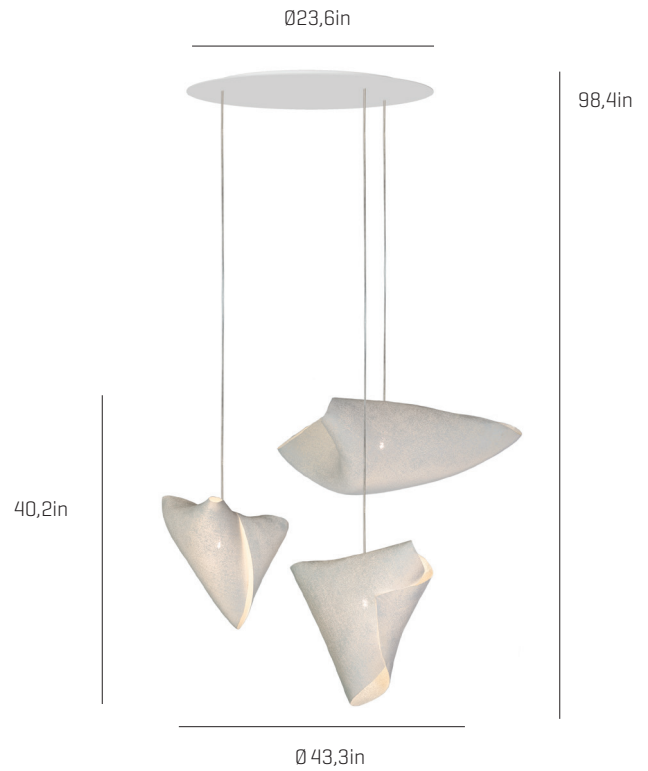
## Ballet composition

ref. **BA04-3**

Lampshades

refs. 1xBAPI04, 1xBARE04, 1xBALA04

Pendant lamp



Ballet Collection

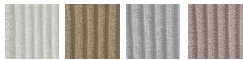


### MATERIAL FINISHES

#### LAMPSHADE

Painted stainless steel

One color to choose



Stainless steel

#### CANOPY AND CABLE

DIBOND®

Transparent cable

### RECOMMENDED BULBS


#### 120V - 60Hz

 E26 Med. - Max. 3x100 W

 E26 Med. - Max. 3x42 W

 E26LED - Max. 3x13 W

upon request:

 GU24 - Max. 3x23 W

### OTHER TECHNICAL DATA

#### NET WEIGHT

12,6lb

#### PACKAGING

23,6x31,5x45,7in

30,2lb

#### ELECTRICAL FEATURES



#### CERTIFICATIONS



Box contains | Contenido de la caja:

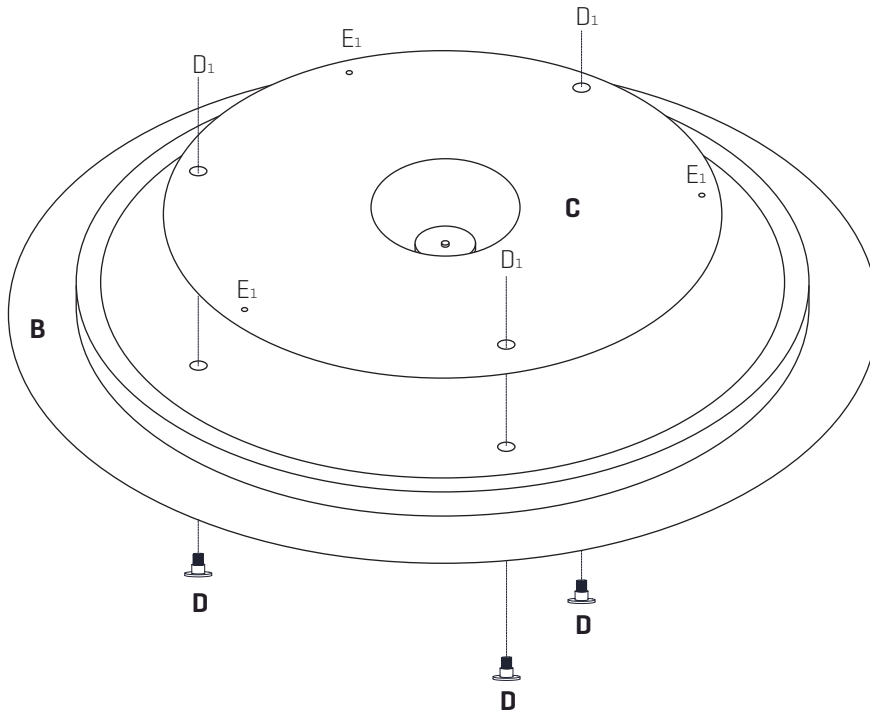
- A** - Lampshade | Tulipas [3]
- B** - Canopy | Florón [1]
- C** - Frame | Soporte [1]
- D** - Cap | Tapón [3]

- E** - Screws | Tornillos [3]
- F** - Wall plug | Tacos [3]
- G** - Electrical disposal | Ficha conexión [3]

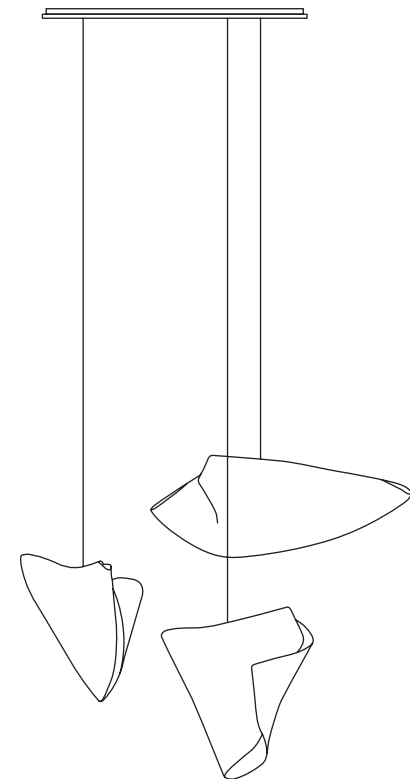
ref. **BA04 - 3**

Suitable for indoor use at 77°F

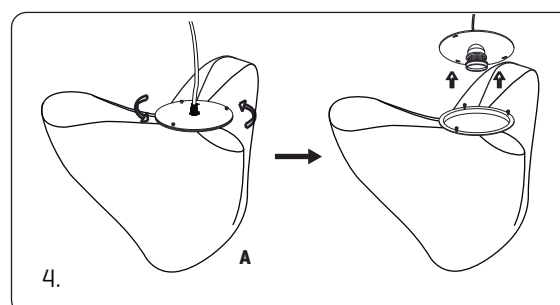
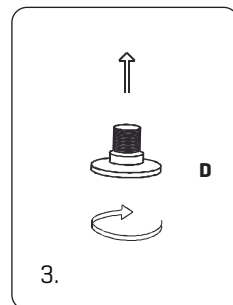
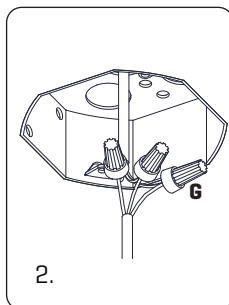
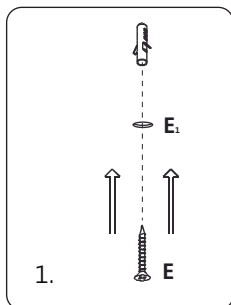
Apta para uso interior a temperatura ambiente de 77°F

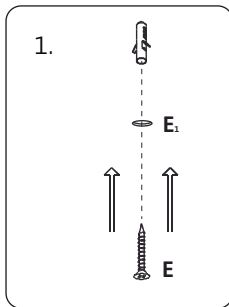


FRONTAL VIEW | VISTA FRONTAL



98.4 in





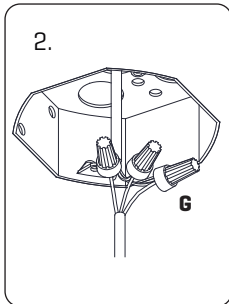
1.

1. Make holes in the ceiling as marked in the frame with the letter E<sub>1</sub>, insert the wall plugs and fix the frame.

\* Our plugs are appropriate for concrete ceilings only

1. Hacer los taladros en el techo según los marcados en el soporte con la letra E<sub>1</sub>, colocar los tacos y fijar el soporte.

\* Nuestros tacos son sólo aptos para superficies de hormigón



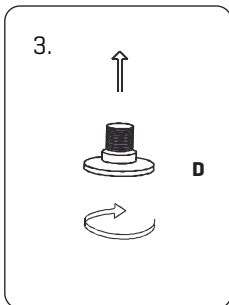
2.

2. Pass the electrical wires inside the octagon box.

Make the electrical connections taking care to respect the correct polarity as the color code.

2. Pasar los cables eléctricos al interior de la caja de conexiones.

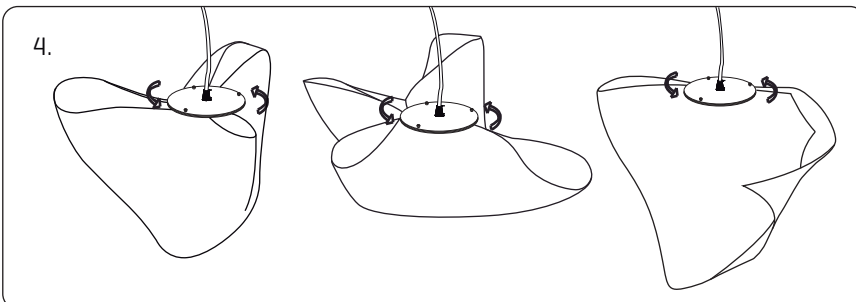
Realizar la conexión eléctrica en las fichas de conexión G teniendo cuidado de respetar la polaridad correcta según el código de colores.



3.

3. Once the frame is fixed, screw the caps in the holes marked with D<sub>1</sub>.

3. Colocado el soporte, enroscar los tapones en los taladros marcados con la letra D<sub>1</sub>.



4.

4. All the lampholder are marked with its appropriate lampshade [name].

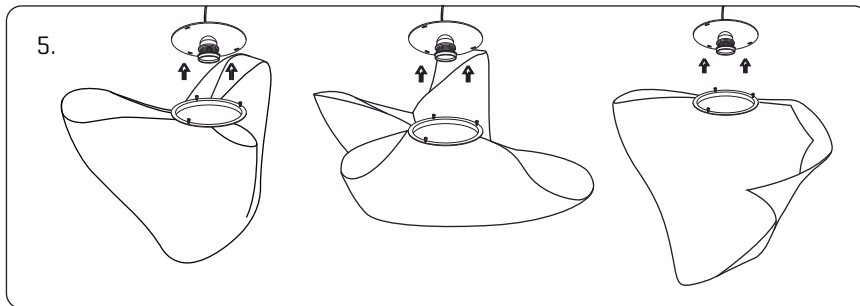
Place the light bulbs. [During this step, it is important to take greatest of care in this step, since holding of the lampshade with strength may modify its original design]

Slightly turn the lampholder.

4. Todos los portalámparas están marcados con la tulipa correspondiente [nombre].

Colocación de las bombillas. [Durante este paso, es importante tener el máximo cuidado, ya que al manejar la tulipa con demasiada fuerza se puede modificar su diseño original]

Girar levemente el soporte del portalámparas



5. Separate the lampshade to the lampholder

5.1 Repeat the process in reverse once placed bulbs, fitting the lampshade in the diffuser (metal hoop) grooves and turn it until it reaches the endstop.

Tight the screws to fasten the lampshade and the whole set.

NOTA: The mesh should never be in contact with the bulbs.

5. Separar la tulipa del portalamparas

5.1 Repetir el proceso a la inversa una vez colocadas las bombillas, encajando la tulipa en las rendijas del soporte y girando hasta que haga tope. Apretar los tornillos de enganche para asegurar el conjunto.

NOTA: La malla no debe estar en contacto con las bombillas.